

Ocean County Parks and Recreation

Mantoloking Fishing Pier County Park

30 Mantoloking Road  
Brick, NJ 08723



[www.oceancountyparks.org](http://www.oceancountyparks.org)

Mantoloking Bridge Fishing Pier County Park

This Park caters to all (angler, crabbers and sightseers). The Park features a new 70-foot long fishing and crabbing pier, a boardwalk, picnic area, sun shade gazebo and lighted paths. This Park is not only a site to see during the tourism season, but is also open year-round for residents. The unique Park is situated on a little more than two and a half acres, and highlights many recreational activities that are related to Barnegat Bay.

Passive Recreation

- Lighted Paths
- Boardwalk
- Picnic Area and Benches
- Multi-use pier
- Two Bait cutting and fishing cleaning stations
- Beautiful Views of the Barnegat Bay
- Car Top Boat Launch



Salt Water Fishing - Who Needs to Register?

According to the State of New Jersey Saltwater Recreational Registry Program, “Anglers with a valid registration with the National Saltwater required to register (for free) with the NJ Saltwater Recreational Registry Program. Registration with NJ will exempt you from having to register with the National Saltwater Angler Registry.”

Individual saltwater anglers ages 16 and older MUST register if Any of the following criteria are met:

- Recreationally fish with a hand line or rod and line, spearfish or fish by hand
- Recreationally fish in the marine and fresh tidal waters of the State of New Jersey
- Recreationally fish in marine waters outside the State of New Jersey but land the catch in New Jersey

Individuals saltwater anglers are EXEMPT from registering if either of the following apply:

- Under the age of 16
- Solely fish on for-hire (party and charter) vessels that are registered with the New Jersey Saltwater Recreational Registry Program Resource Information <http://www.state.nj.us/dep/fgw>

It is the responsibility of the user to be familiar with all fishing/crabbing regulations.

[www.nj.gov/dep/fgw/saltwater.htm](http://www.nj.gov/dep/fgw/saltwater.htm)



History

The Mantoloking Fishing Pier County Park was opened in the summer of 2012 by the County. A ribbon cutting ceremony in August 2012 highlighted the new park that complements the areas surrounding the Mantoloking Bridge and taps into Barnegat Bay’s natural recreational activities. However, Hurricane Sandy severely damaged the Park on October 29, 2012. It wasn’t until July 25, 2013, that the Mantoloking Bridge Fishing Pier County Park was able to re-open.



Ocean County Board of Commissioners

Robert S. Arace  
Chairman of Parks and Recreation  
Jennifer Bacchione  
Virginia E. Haines  
John P. Kelly  
Frank Sadeghi



Ocean County Department of Parks and Recreation

Mary Jane Bavais - Director

Administrative Offices  
1198 Bandon Road  
Toms River, NJ 08753  
1-877-OC-PARKS  
Fax: 1-732-270-9464

[www.oceancountyparks.org](http://www.oceancountyparks.org)

[www.facebook.com/OceanCountyParks](https://www.facebook.com/OceanCountyParks)



Printed January 2019  
Prepared and Printed by the Ocean County Printing & Graphic Arts Department

Crabbing in New Jersey



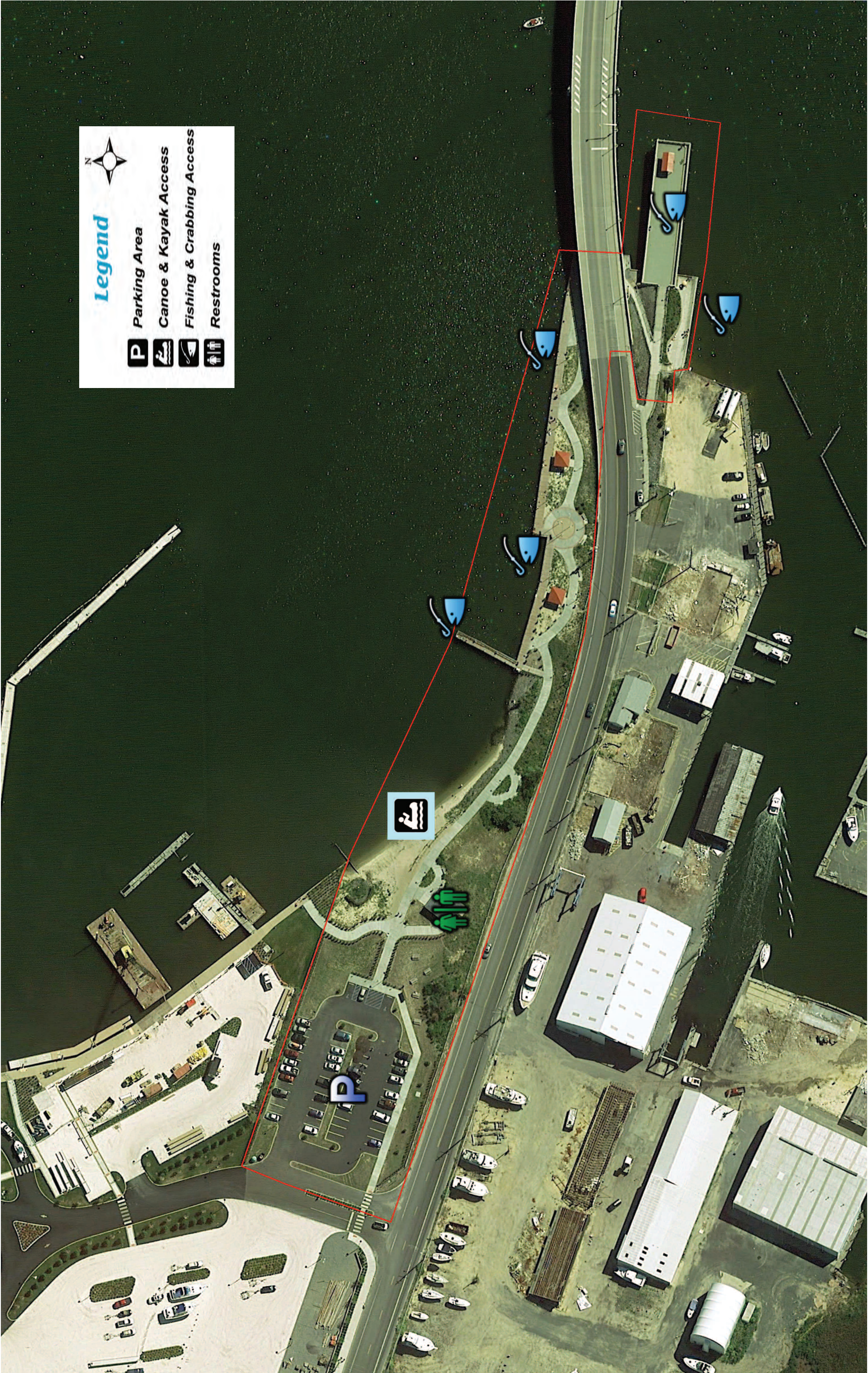
New Jersey has more than 100 miles of ocean and bay coasts which offers plenty of opportunities for the recreational and commercial crabber. Hand-held crab nets do not require a license in New Jersey. The New Jersey Fish and Wildlife’s Bureau of Marine Fisheries require a valid license for any recreational crabbing using pots or trot lines. The license can be obtained for \$2 through various license agents, found through the state’s Division of Fish and Wildlife website. Single-hand lines, hand held scoop nets and collapsible crab traps may be used in the state without a license.

If crabs are undersized, they must be returned to the water. Recreational crabbers in New Jersey may take no more than one bushel of crabs per day. Crabs must be measured point to point and must be at least 4.5 inches if they are hard crabs, 3.5 inches if they are soft crabs or 3 inches if they are peeler or shedder crabs.

You must release any female crab with eggs or spawn attached. Any organisms caught other than crabs or conch must be released, unless you have a valid permit for that specific organism.

<http://www.state.nj.us/dep/fgw/>





**Legend**

 N

 **P** Parking Area

 Canoe & Kayak Access

 Fishing & Crabbing Access

 Restrooms