

Ocean County Parks and Recreation
Cattus Island County Park

1170 Cattus Island Boulevard
Toms River, NJ 08753
732-270-6960



www.oceancountyparks.org

A Park For All Seasons

Cattus Island County Park offers year-round opportunities for nature enthusiasts to experience the wonders of its three distinct ecosystems: the forest, the salt marsh and beautiful Barnegat Bay.



Spring....

- Observe the return of songbirds, butterflies and Ospreys

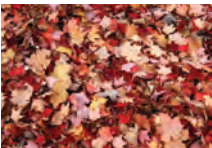
- Take in the sights and fragrances of blooming shrubs and wildflowers
- Borrow one of our loaner bikes and ride the main trail to the sandy beach

Summer....

- Watch fledging Ospreys practice their first flights while adult Ospreys fish the waters of the Barnegat Bay



- Borrow one of our Discovery Backpacks, full of activities and tools, to explore Cattus Island



Autumn....

- Hike Cattus Island's trails to witness the beauty of the fall foliage

- Join a Cattus Island Naturalist for one of our time-honored traditions: our free weekend nature walks at 2 pm

Winter....

- Bring your snowshoes or cross-country skis for an unforgettable trek along our trails
- Enjoy the wide variety of winter birds that visit our feeders
- Visit the Cooper Environmental Center to view our variety of live animals native to Ocean County



Trail Rules

Below are some important rules to help make your visit safe and enjoyable:

- Please take a trail map from the nature center or review the trail kiosk before using the trails.
- Be sure to check the closing times posted at the park entrance before using the trails.
- For your safety, please stay on the marked trails.
- Alcoholic beverages, smoking, and campfires are not permitted.
- Dogs must be on a leash at all times. Please pick-up after your pet.
- Carry out your trash and a little extra if you can!
- Do not feed or approach wildlife, please enjoy it from a distance.

Public Use

Admission to the park and Cooper Enviromental Center is **FREE**.

The park is open every day from **7:00 am to dusk**.

The Cooper Environmental Center is now **OPEN!**

Weekdays 8:30 am to 4:00 pm.

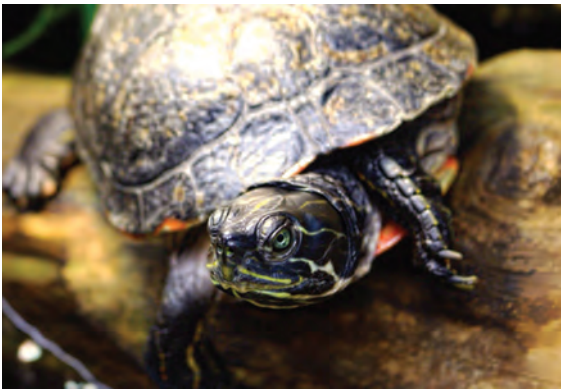
Weekends 10:00 am to 4:00 pm.

****Please be advised that ticks may be present****

Cooper Environmental Center



Interactive exhibits of the local history, wildlife and ecology of the Barnegat Bay ecosystem



Live reptiles and fish



Ocean County Parks' online newsletter lists both free and affordable fee-based programs held at the Cooper Environmental Center

Ocean County Board of Commissioners

Robert S. Arace
Chairman of Parks and Recreation
Jennifer Bacchione
Virginia E. Haines
John P. Kelly
Frank Sadeghi



Ocean County Department of Parks and Recreation

Mary Jane Bavais, *Director*

Administrative Offices
1198 Bandon Road
Toms River, NJ 08753
(732) 506-9090
Fax: 1-732-270-9464

www.oceancountyparks.org

[www.facebook.comOceanCountyParks](https://www.facebook.com/OceanCountyParks)



C.P. 128

Printed January 2019

Prepared and Printed by the Ocean County Printing & Graphic Arts Department

Cattus Island Butterfly Garden



A stunning collection of native and cultivated plants provide nectar and shelter for hummingbirds and a variety of butterflies. The garden is open year-round, but is most active from mid-May to mid-October.



Free Loaner Bikes & Discovery Backpacks



Free Weekend Nature Walks at 2 pm

Group Programs

We provide environmental programs to Ocean County groups including schools, Scouts, clubs, churches, and civic organizations free of charge. Outreach programs are available for groups who may not have transportation to our facility. All groups planning to visit our park must make arrangements in advance. Please contact the Cooper Environmental Center at **732-270-6960** to schedule a program.

Cattus Island County Park Trail Map

Legend

1.0 mi.	Main Trail (no blazes)	★	Cooper Environmental Center and Restrooms
1.6 mi.	Maritime Forest Trail (red blazes)	★	Farmhouse Site and Outdoor Classroom
0.4 mi.	Swamp Crossing Trail (red and white blazes)	★	Maintenance Building
1.5 mi.	Island Trail (blue blazes) Biking Permitted	P	Public Parking
0.8 mi.	Island Trail Extension (blue and white blazes)	♂ ♀	Portable Restroom and Picnic Area
1.6 mi.	Yellowbank Trail (yellow blazes)	👶	Playground and Picnic Area
0.6 mi.	Hidden Beach Trail (orange blazes)	👁️	Bird Observation Blind
0.2 mi.	Boardwalk Trail	🚤	Cartop Boat Launch
—	Dirt Road	🦅	Osprey Nest Platform
—	Paved Road		
—	Park Boundary		
—	Sewer Easement (no trail)		



Trail Blazes

