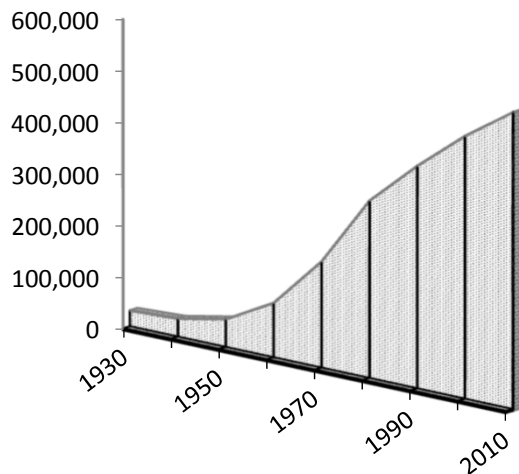


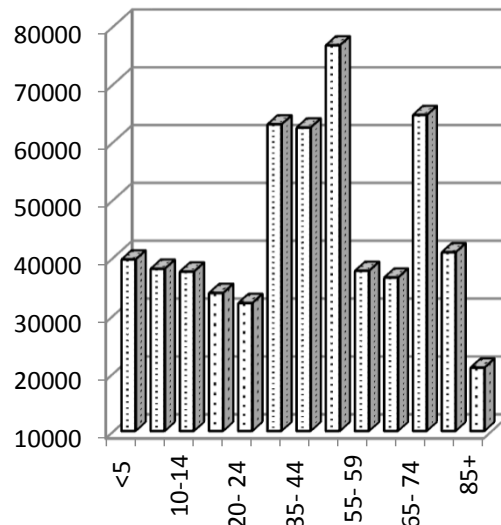
Profile of Ocean County, New Jersey

DATE OF INCORPORATION:	1850	INCOME	2012	2016
LAND AREA (sq.miles):	638.1	Median Household	\$61,038	\$63,108
WATER AREA (sq. miles):	286.6	Per Capita	\$30,397	\$31,903
POPULATION – ACS 2012-2016				
Total	586,166	LAND USE (Parcels)		
Male	282,068	Vacant	29,902	26,898
Female	304,098	Residential	239,803	243,087
Median Age	42.8	Farm Regular	262	259
Percent population over 62 years old	25.7%	Farm Qualified	464	466
Persons per Household	2.60	Commercial	6,711	6,754
Est. Density (Population /Sq. Mi.)	917	Industrial	410	404
		Apartment	355	351
		Exempt Total	16,235	19,013
		Total Ratables & Exempt	294,142	297,264
HOUSING – ACS 2011-2015				
Total Housing Units	280,508	2017 DEVELOPMENT APPROVALS-		
Households	222,609	Ocean County Planning Board		
Seasonal Housing Percentage	14.1%	Subdivision and Site Plan Approvals	363	
Median Home Value (ACS)	\$264,200	New Lots (mostly residential)	1,674	
		Commercial and Industrial Sq. Ft.	1,379,303	
		2017 Residential Building Permits**	3,427	
EMPLOYMENT-NJ Dept. Labor (Ann. Avg.)				
2015 Potential Labor Force	271,100			
2015 Actual No. Residents Employed	258,100			
2015 Unemployment Rate	4.8%			

Population Growth 1930 – 2010



2017 Population by Age*



Notes: *ACS=2012-2016 American Community Survey 5-Year Estimates, August 2016; US Census Bureau. Not adjusted for inflation
 **NJ Department of Labor and Workforce Development, Labor Planning and Analysis, Labor Market and Demographic Research, Bureau of Labor Force Statistics, June 2018.