

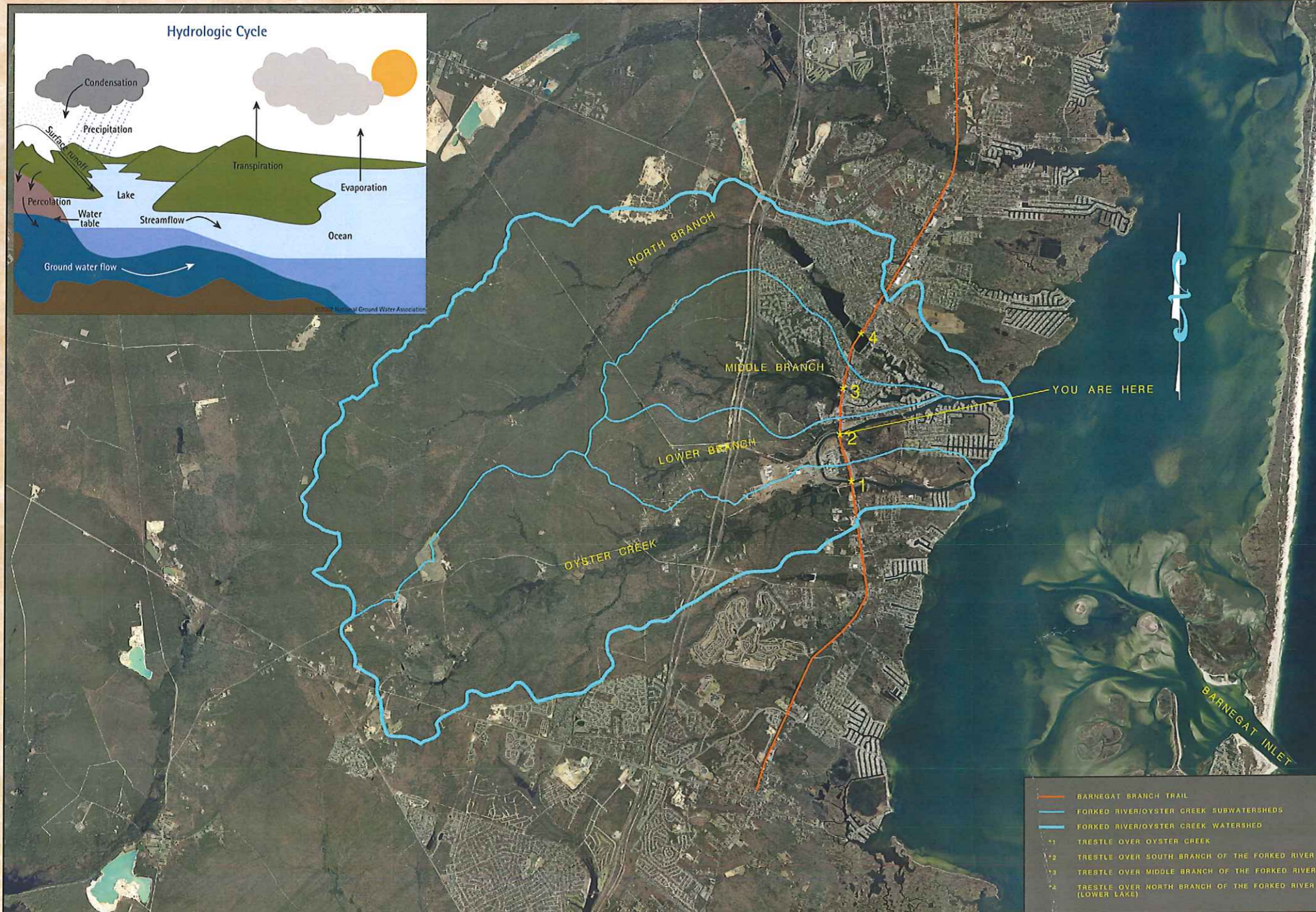


OCEAN COUNTY BOARD OF CHOSEN FREEHOLDERS

# BARNEGAT BRANCH TRAIL

DEPARTMENTS OF PLANNING, ENGINEERING AND PARKS & RECREATION

## WELCOME TO THE WATERSHED OF THE SOUTH BRANCH FORKED RIVER



A watershed is the area where all the surface water and ground water drains to the same waterway. The watershed boundary, or ridgeline, is the line of highest elevation around the watershed. From this point, all the water within the watershed boundary will flow on the surface or in the ground to the same stream, river, lake, estuary, ocean, etc. Most of Ocean County is located within the Barnegat Bay Watershed which is approximately 700 square miles. All the water within this watershed ultimately ends up in Barnegat Bay. The Barnegat Bay Watershed can be further broken up into smaller subwatersheds for the individual rivers and streams within the watershed. The Barnegat Branch Trail has 4 trestles crossing Oyster Creek, the South Branch of the Forked River, the Middle Branch of the Forked River, and Lower Lake each in their own subwatershed.

The watershed for Oyster Creek is approximately 13 square miles which includes the upland tributaries of Oyster Creek and the power plant's discharge canal. This watershed is primarily undeveloped and includes parts of Lacey Township, Ocean Township, and Barnegat Township. Wells Mills Reservoir in Wells Mills County Park is within the boundaries of this watershed.

The watershed for the South Branch of the Forked River is approximately 4.3 square miles which includes the upland tributaries of the South Branch of the Forked River extending less than 3.5 miles west of the Barnegat Branch Trail. This watershed is primarily undeveloped west of the trestle along the Barnegat Branch Trail. East of the trestle is more than half residentially developed. Most of Clune Park is located within this watershed.

The watershed for the Middle Branch of the Forked River is approximately 4.9 square miles which includes the upland tributaries of the Middle Branch of the Forked River extending less than two miles west of the Garden State Parkway. A portion of the Edwin B. Forsythe National Wildlife Refuge is located within this watershed.

The watershed for the North Branch of the Forked River is approximately 16.8 square miles which includes the upland tributaries of the North Branch of the Forked River, Long Branch, and Forked River, Lower Lake, Lake Barnegat, and Deer Head Lake. There is about 13.3 square miles of undeveloped land west of the Garden State Parkway while the rest of the watershed is residentially and commercially developed. Enos Pond County Park and Huffy Wallis Park are located within this watershed.

The Barnegat Branch Trail logo was explicitly designed with history in mind: Lady Liberty's silhouette is reminiscent of the Central Railroad of NJ (CNJ) logo, adopted by the railroad in 1944 to reflect the close proximity of the CNJ Terminal in Jersey City to the Statue of Liberty. The BBT logo also includes a ghost locomotive, as well as Ocean County's most recognizable environmental features.

