

The Cattus Island Butterfly Garden



Cattus Island Park Cooper Environmental Center

1170 Cattus Island Blvd.
Toms River, NJ 08753
(732) 270-6960
Toll-free 1-877-OC PARKS
TTY (732)270-5573
www.oceancountyparks.org

Ocean County Board of Chosen Freeholders
John C. Bartlett Jr.

Chairman, Parks and Recreation

John P. Kelly

James F. Lacey

Gerry P. Little

Joseph H. Vicari



Gardening for Butterflies

The Cattus Island Butterfly Garden is a showplace for many butterfly attracting plants. It exists to attract native butterflies to an easily accessible viewing location. The diverse selection of plants allows visitors to observe butterflies they might not see in their backyards.

Most of the plants in the garden provide nectar for adult butterflies. Some of the plants serve as host plants for butterfly larvae. For example, the monarch butterfly lays its eggs only on milkweed leaves.

The garden also provides a source of water and shelter found in the surrounding trees and shrubs.

Notice how the garden is open to sunlight. Butterflies rely on the sun's heat to warm their bodies for flight. Flowering plants produce nectar in relation to the amount of light the plant receives. When the sun shines on the garden, the plants can produce large amounts of nectar. This large, centralized nectar source attracts a variety of native butterflies.

What can you find in the garden?

- Key: ✓
 Bloom color
 Height of plant
 Native range of plant
 Bloom time
 Butterflies using the species as a host plant.

* This is only a partial list of plants found in the garden. If you find a plant that is not listed, please ask for help in the Cooper Environmental Center.

Bee Balm

Monarda fistulosa



www.wiseacre-gardens.com

- ✓ Perennial
- Purple to pink
- ↓ 3-4 feet
- ☉ North America
- ☀ Early July to late August
- 🦋 Mourning Cloak, Spring Azure

Common Milkweed

Asclepias syriaca

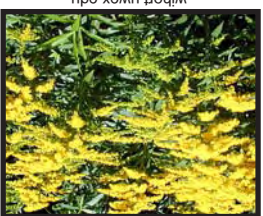


aeon.standardout.com

- ✓ Perennial
- Pink
- ↓ 2-3 feet
- ☉ North America
- ☀ Mid June to late July
- 🦋 Monarch, Eastern Tiger Swallowtail

Goldenrod

Solidago sp.



withort.uwex.edu

- ✓ Perennial
- Yellow
- ↓ 1-2 feet
- ☉ North America
- ☀ August to October
- 🦋 Clouded Sulphur



Silver-Spotted Skipper



Common Buckeye

Butter and Eggs

Linaria vulgaris



www.weidlandschaft-eider.de

- ✓ Annual
- Yellow and white
- ↓ 1-3 feet
- ☉ Europe
- ☀ May to October
- 🦋 Buckeye

Thistle

Carduus sp.



- ✓ Perennial
- Purple
- ↓ 2 feet
- ☉ Eurasia
- ☀ Early May to early August
- 🦋 American Lady, Eastern Tiger Swallowtail

Black-eyed Susan

Rudbeckia fulgida cv. Golsturm
Rudbeckia laciniata



aggie-horticulture.tamu.edu

- ✓ Perennial
- Yellow with black center
- ↑ 2-3 feet
- ☉ North America
- ☀ Late August to October

Sneezeweed

Helenium autumnale



www.dobrepole.pl

- ✓ Perennial
- Yellow and red
- ↑ 4-6 feet
- ☉ Northern America
- ☀ August & September

Female Black Swallowtail



Black Swallowtail Larvae



Male Black Swallowtail



False Sunflower

Heliopsis helianthoides



www.cobleskill.edu

- ✓ Perennial
- Yellow
- ↑ 2-4 feet
- ☉ North America
- ☀ July to September
- 🦋 Owllet Moths

Culver's Root

Veronicastrum virginicum



personalpages.tds.net0

- ✓ Perennial
- White
- ↑ 4-6 feet
- ☉ North America
- ☀ July-September
- 🦋 Noctuid moth species

False Indigo

Baptisia australis



www.mobot.org

- ✓ Perennial
- Blue
- ↑ 2-4 feet
- ☉ North America
- ☀ Early June to August
- 🦋 Frosted Elfin, Wild Indigo Duskywing



Male Monarch



Female Monarch

Catmint

Nepeta faassenii



- ✓ Perennial
- Lavender-blue or purple
- ↑ 1-3 feet
- ☉ Eurasia
- ☀ Late June to September
- 🦋 Mourning Cloak

Butterfly Bush

Buddleia sp.

- ✓ Shrub
- ✍ Purple and pink
- ↑ 6-10 feet
- 🌐 Northern Asia, South America, South Africa
- 🌸 July to October



www.natorp.com

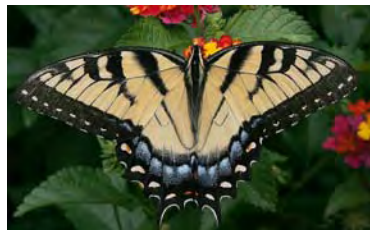
Appleblossom Grass

Gaura lindheimeri

- ✓ Perennial
- ✍ Pink or white
- ↑ 18-24 inches
- 🌐 North America
- 🌸 July to September



aoki2.si.gunma-u.ac.jp



Tiger Swallowtail

Common Yarrow

Achillea millefolium

- ✓ Perennial
- ✍ White and pastels
- ↑ 6 inches to 3 ft.
- 🌐 Eurasia
- 🌸 Late May to November
- 🦋 Red-banded Hairstreak



www.plantsofthewild.com

Sage

Salvia lyrata
Salvia superba
Salvia sylvestris
Salvia nemorosa

- ✓ Perennial
- ✍ Blue
- ↑ 12-15 inches
- 🌐 Europe
- 🌸 May to August



www.nps.gov

Garden Phlox

Phlox paniculata

- ✓ Perennial
- ✍ Pink or white
- ↑ 3-4 feet
- 🌐 North America
- 🌸 Early July to early October



www.cat.hollyridgeonline.com

Hyssop

Agastache cv. Blue Fortune
Agastache cv. Black Adder

- ✓ Perennial
- ✍ Purple-blue, white, or pink
- ↑ 3-5 feet
- 🌐 Mediterranean
- 🌸 Late July to early October
- 🦋 Eastern Tiger Swallowtail



Joe Pye Weed

Eupatorium purpureum
Eupatorium cv. 'Lil' Joe

- ✓ Perennial
- ✍ Deep crimson or purple
- ↑ 4-6 feet
- 🌐 North America
- 🌸 July and August
- 🦋 Silver Spotted Skipper



www.extension.iastate.edu

Coneflower

Echinacea purpurea
Echinacea tennesseensis
Echinacea cv. White Swan

- ✓ Perennial
- ✍ Pink or white
- ↑ 3 feet
- 🌐 North America
- 🌸 Late July to mid October
- 🦋 Red Admiral



aggiehorticulture.tamu.edu

Speedwell

Veronica longifolia
Veronica spicata cv. Noah Williams

- ✓ Perennial
- ✍ Blue
- ↑ 3-4 feet
- 🌐 North America
- 🌸 June-September



www.s-weeds.net

Upright Verbena

Verbena bonariensis

- ✓ Perennial
- ✍ Purple
- ↑ 3-4 feet
- 🌐 South America
- 🌸 July-October



gerard4.free.fr



Red Admiral

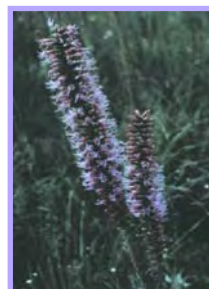


Painted Lady

Blazing Star

Liatris spicata

- ✓ Perennial
- ✍ Purple
- ↑ 2-6 feet
- 🌐 North America
- 🌸 Late July to early September
- 🦋 Red Admiral



plants.usda.gov

Sweet pepperbush

Clethra cv. Hummingbird

- ✓ Shrub
- ✍ White or pink
- ↑ 3 feet
- 🌐 Eastern North America
- 🌸 Late July to early September
- 🦋 Spicebush Swallowtail



www.ct-botanical-society.org

Butterfly weed

Asclepias tuberosa

- ✓ Perennial
- ✍ Red-orange
- ↑ 2-3 feet
- 🌐 North America
- 🌸 Late June to early August
- 🦋 Monarch



www.marysplantfarm.com

Ironweed

Vernonia noveboracensis

- ✓ Perennial
- ✍ Purple
- ↑ 3-7 feet
- 🌐 North America
- 🌸 August to October
- 🦋 Black Swallowtail

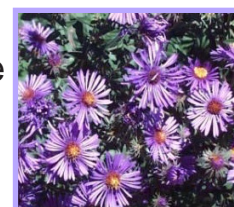


www.wnnaturally.com

New England Aster

Aster novae-angliae

- ✓ Perennial
- ✍ White or purple
- ↑ 1-7 feet
- 🌐 North America
- 🌸 August to October
- 🦋 Viceroy



www.savannasprings.com

Tickseed

Coreopsis sp.

- ✓ Perennial
- ✍ Yellow
- ↑ 1-2 feet
- 🌐 North America
- 🌸 Early July to early September
- 🦋 Clouded Sulphur



Stokes Aster

Stokesia laevis

- ✓ Perennial
- ✍ Blue, yellow, white
- ↑ 1-2 feet
- 🌐 North America
- 🌸 Summer to Autumn



www.biology.smsu

