



OCEAN COUNTY BOARD OF CHOSEN FREEHOLDERS

# BARNEGAT BRANCH TRAIL

DEPARTMENTS OF PLANNING, ENGINEERING AND PARKS & RECREATION

## WELCOME TO ROYAL PINES HOTEL (1929)

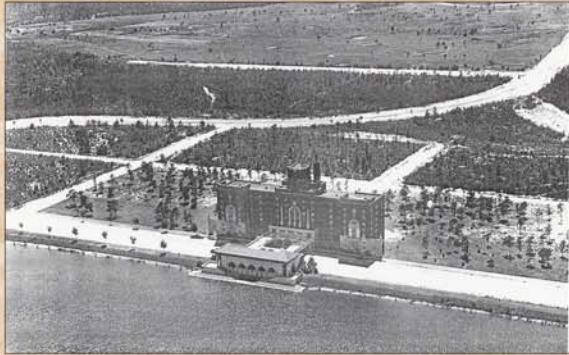


Sangor's Pinewald Station. Photo: July 1950

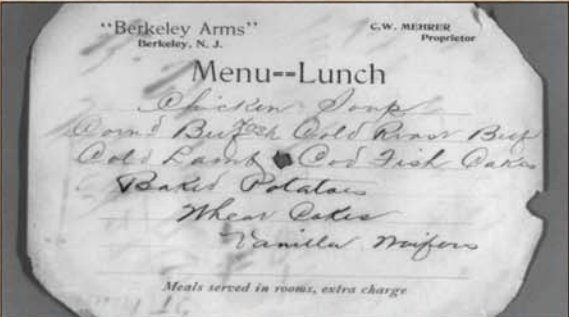
E.H. Weber. Collection of Berkeley Historical Society.



Collection of Berkeley Historical Society.



Dolan Collection. Hagley Museum and Library.



Collection of Berkeley Historical Society.

**M**any Pinelands development companies defaulted on their taxes during the Great Depression. The Royal Pines Hotel at Pinewald was not completed until after the stock market crash. A special train brought guests from New York to the grand opening on November 18, 1929. The hotel struggled on through two winter seasons, while Pinewald remained a city of empty lots and magnificent distances. The desolation attracted bootleggers (perhaps even Al Capone himself) who installed a 2,500-gallon still in the gutted interior of Sangor's concrete villa, while lookouts scanned the roads from the roof of the abandoned Royal Pines. Between 1932 and 1934, the hotel was sold at three successive sheriff's sales. It stood empty for a number of years but was finally converted to a hospital and is now a nursing home, one of the few tangible monument(s) to the aspirations of Pineland developers.

Adapted from the Berkeley Historical Society.

For more information, please visit:

Berkeley Township Historical Society, 630 Route 9, Bayville, NJ 08721

### A Timeline of the Royal Pines Hotel

- 1928** B W Sangor Corporation constructs the **Royal Pines Hotel**. Designed by Russian architect W. Oltar-Jevsky the hotel cost an astounding \$1,500,000 and formally opened November 1, 1930. The expansive vision includes an 18 hole golf course, Crystal Lake, an 8000 lot housing development, a bay front pavilion, and a large nature preserve.
- 1935** Purchased from bankruptcy for \$50,000 and remodeled as The **Royal Pines Hospital**. Some "locals" were born here. The operating room was located on the seventh floor.
- 1947** New Owners change the name to **Dennis Memorial Hospital**. Local "Baby-Boomers" are born around this time
- 1950** Hospital converted to the **Pinehaven Nursing Home and Sanitarium**.
- 1970's** The nursing home changes names again to the **Bayview Nursing Home** and in the later 1970's changes its name to **Bayview Convalescent Center**.
- 1999** Renovated to become **Crystal Lake Health-care & Rehabilitation**.



OCEAN COUNTY PARKS & RECREATION  
The Central Railroad of New Jersey adopted the Statue of Liberty logo because the Hudson River terminal was in Jersey City with a dramatic view of New York Harbor.

Adapted from the Berkeley Historical Society Timeline.