

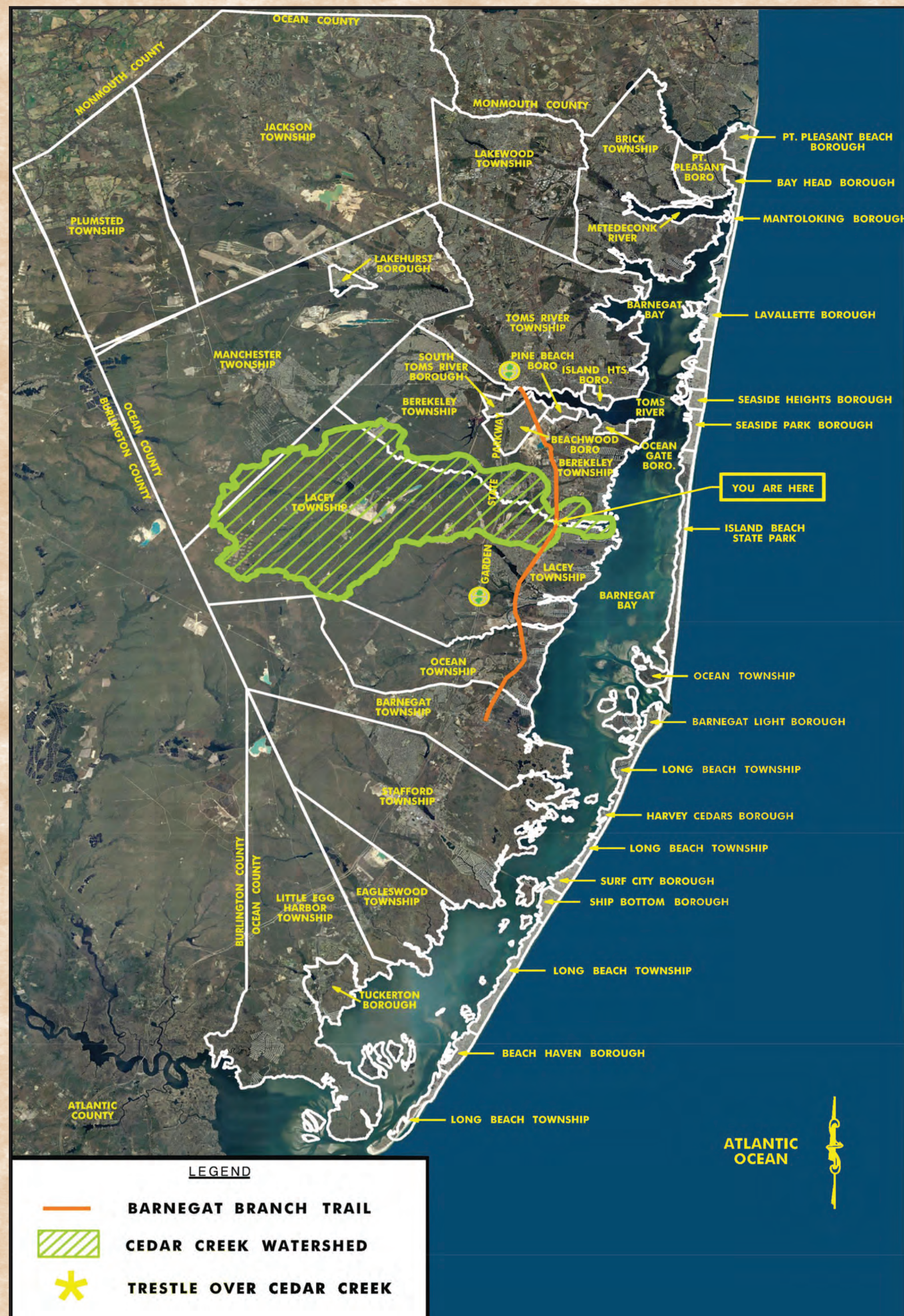


OCEAN COUNTY BOARD OF CHOSEN FREEHOLDERS

BARNEGAT BRANCH TRAIL

DEPARTMENTS OF PLANNING, ENGINEERING AND PARKS & RECREATION

WELCOME TO THE WATERSHED OF CEDAR CREEK

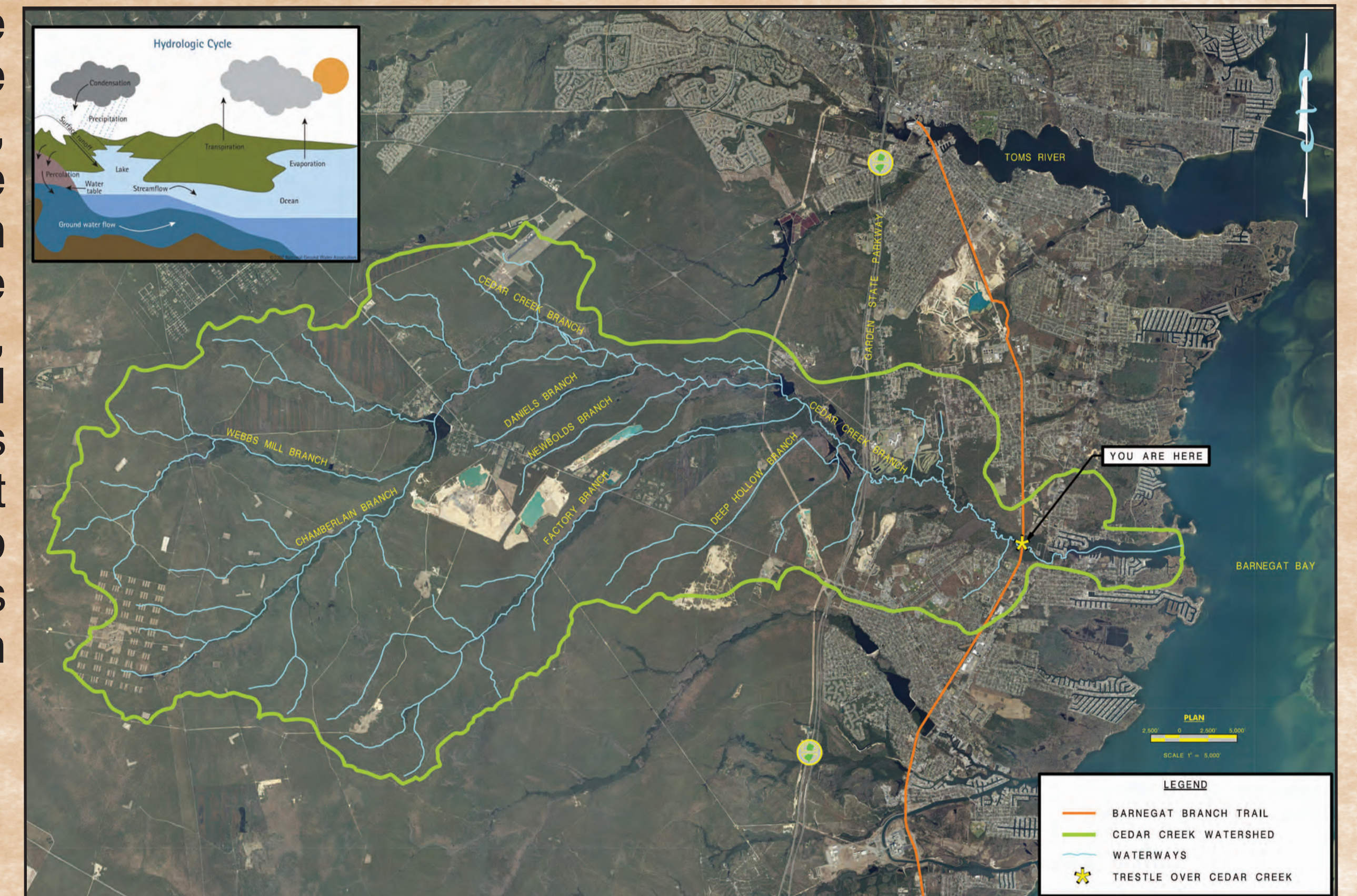


Cedar Creek Watershed in Ocean County, prepared by Ocean County Engineering.

A watershed is the area where all the surface water and ground water drains to the same waterway. The watershed boundary, or ridgeline, is the line of highest elevation around the watershed. From this point, all the water within its boundary will flow on the surface or in the ground to the same stream, river, lake, estuary, bay or ocean. Most of Ocean County is located within the Barnegat Bay Watershed which is approximately 700 square miles. The Barnegat Bay Watershed can be further broken up into smaller subwatersheds for its individual rivers and streams. You are currently located within the Cedar Creek subwatershed.

The Cedar Creek subwatershed is approximately 55 square miles in size. It includes many upland tributaries and extends almost 13 miles west of the Cedar Creek Trestle. Some points of interest within the watershed include Double Trouble State Park, Gille Park, William Hebrew Park, William J. Dudley Park, Cedar Creek Golf Course, Robert J. Miller Airpark, Bamber Lake, Popcorn Park Zoo, as well as many residential communities in Berkeley and Lacey Townships.

General knowledge of watersheds is important to everyone because it shows how far water will travel to get to a common location. This means that if any of the water within this watershed is polluted, that pollution will end up in Cedar Creek and ultimately in Barnegat Bay. Please think twice about littering, and put trash in the proper trash receptacles. Do not dump anything into waterways, drains, or inlets and don't dump directly onto the ground as these contaminants will eventually reach important waterways in our area. Contaminants do harm to the sensitive ecosystems, putting our wildlife and vegetation at risk. Please respect our environment.



The Barnegat Branch Trail logo was explicitly designed with history in mind: Lady Liberty's silhouette is reminiscent of the Central Railroad of NJ (CNJ) logo, adopted by the railroad in 1944 to reflect the close proximity of the CNJ Terminal in Jersey City to the Statue of Liberty. The BBT logo also includes a ghost locomotive, as well as Ocean County's most recognizable environmental features.